

WAIMATE DISTRICT

OFFICIAL VISITOR GUIDE



we are here!

WAIMATE

a district to explore

waimate.org.nz

welcome

Nestled at the foot of the rolling Hunters Hills, the Waimate District offers travellers a unique destination off the beaten track.

Wide spacious streets, valued heritage buildings, amazing street art, and beautiful parks and gardens create a relaxed and friendly environment.

You'll be able to hand-feed wallabies, walk or cycle through tranquil bush, hunt, fish and boat in the stunning Waimate Lakes area, ride horses, play golf, explore the natural abundance of the district, and take part in many fun-filled events and activities.

Spectacular scenery, fabulous destination shops and amazing eateries, plus an event calendar bursting with events, makes the Waimate District the place to be.

welcome to
the Waimate District



enjoy your time here!

contents

Plan and Book	4
Highlights	5
Maps	6
Event Calendar	10
Walking & Biking	14
Wallabies	34
Nature	35
The Great Outdoors	36
Parks & Reserves	38
Destinations	39
Golf	40
Culture & Heritage	42
White Horse Lookout	45
Arts & Crafts	46
Silo Art	48
Shopping	49
Food & Drink	52
Accommodation	60
Camping	66
Dog Friendly District	68
Real Estate	69
Motoring	70
Distances & Drive Times	71

plan & book

visit our information centre

The Waimate Information Centre is the front door to our district's unique offerings and experiences.

We are the official source of visitor information for those coming to the Waimate District.

Come and see us for quality, objective information and booking services. Our experienced staff (the local experts) can help you with your plans and/or enquiries ranging from accommodation, activities, attractions, events, eateries and everything in between.

Use this guide and talk to our friendly team, so you can make the most of your time in our unique part of New Zealand and explore all the Waimate District has to offer.

- ✓ trip planning
- ✓ must see sights
- ✓ events
- ✓ local souvenirs
- ✓ activities
- ✓ accommodation

Lake Aviemore



WAIMATE INFORMATION CENTRE

- 📍 Waimate Event Centre
15 Paul Street, Waimate
- ☎ 03 689 7771
- 📧 info@waimatedc.govt.nz

highlights

Get up close and hand feed **wallabies**.

Visit a berry farm and sample fresh **strawberries**, which Waimate is famous for!

Be wowed with the panoramic view from the **White Horse Lookout** and feel the adrenalin pumping as you mountain bike down 'The Big Easy'.

Camp on the shores of Lakes Aviemore and Waitaki in the magnificent **Waimate Lakes area**, catch trout or salmon, jet boat or just kick back and enjoy life!

Sample **local cuisine** at one of the many cafes and restaurants.

Enjoy the company of tuis and bellbirds in the **native bush**.

Walk or cycle the network of tracks around the district.

Pick your own fresh **raspberries** at a local berry farm.

Swim in our local outdoor heated swimming pool or bush waterfalls.

Do a self-guided tour of the **Old Waimate Cemetery** to learn about our early settlers.

Get to know the stories behind those depicted on the **Waimate Silos**.

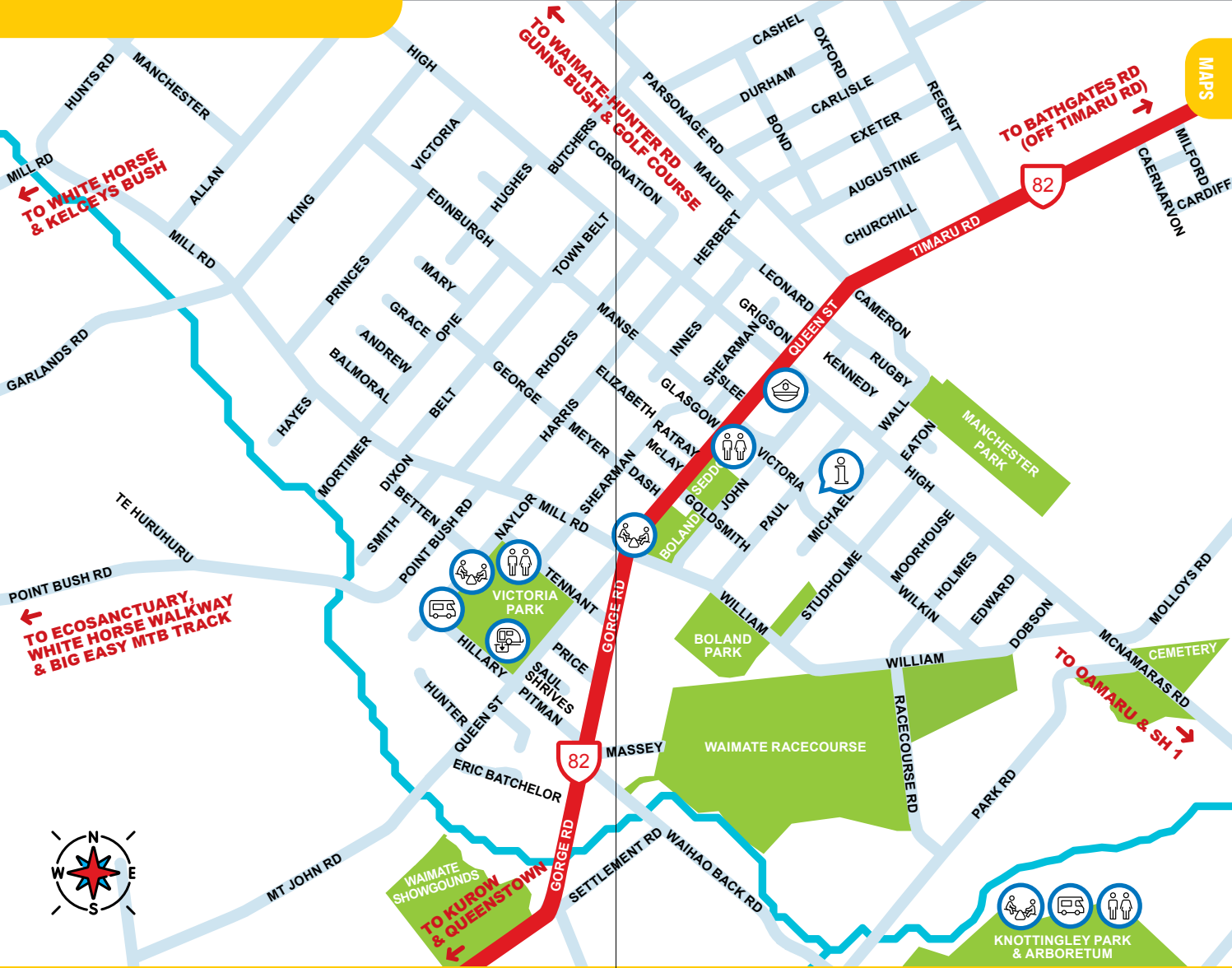
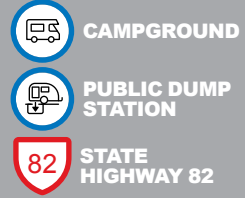
Play **golf** and enjoy country hospitality.

Have a round of **disc golf** at **Victoria Park**.

Enjoy **150+ events** throughout the year.

Explore the many **parks** and **reserves** in the district.

explore
WAIMATE
 street map



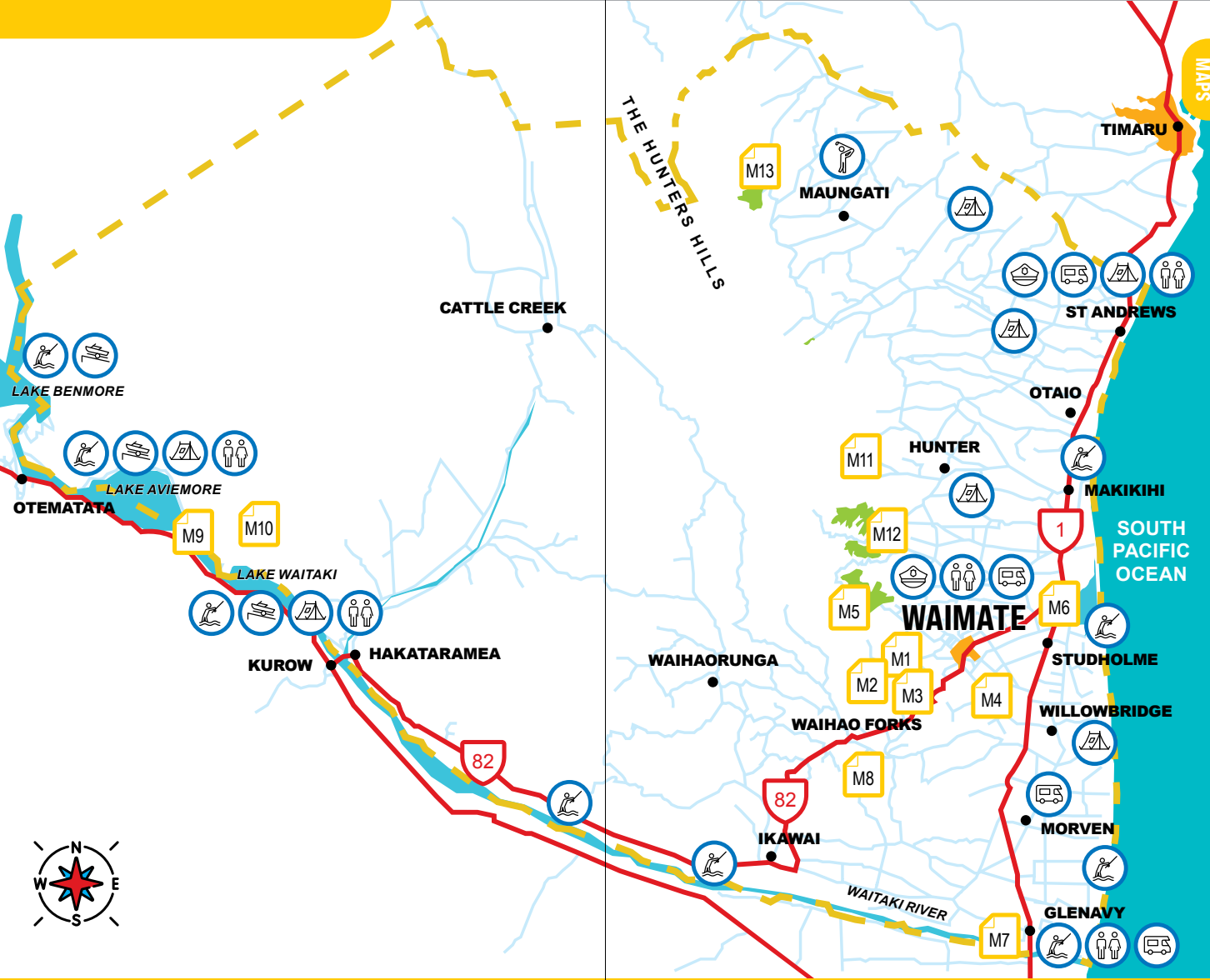
explore
WAIMATE
 district map

- POLICE STATION
- PUBLIC TOILETS
- CAMPING

- BOATING
- CAMPGROUND
- FISHING

- GOLF
- STATE HIGHWAY
- DISTRICT BOUNDARY

M
 MAP ON THIS GUIDE



explore event calendar

JAN

CALEDONIAN GAMES

Annual highland games complete with athletics, cycling, highland dancing, piping and caber tossing.

FEB

WAIMATE RODEO

Enjoy a country rodeo at its best with bucking bulls and broncos.

MAR

MARCH HARE MOTORCYCLE RALLY

Largest motorcycle rally in the South Island held over two days.

BUSHTOWN STEAM UP DAY

Step back in time with members of the South Canterbury Traction Engine Club.

SPORT WAIMATE ANNUAL TRIATHLON

Run, swim and bike. Categories for all ages.

APR

PEST QUEST

Hunters set their sights on pigs, wallabies, possums, deer and goats.

THE VETERINARY CENTRE WHITEHORSE BIG EASY

Mountain bike, walk or run The Veterinary Centre Whitehorse Big Easy.

MAY

WAIMATE WINTER POULTRY SHOW

Classy heritage poultry breeds strut their stuff!

JUN

WAIMATE FOLK FESTIVAL

A weekend of music and dance.

EVENT CALENDAR



SEP

SCOFF – SOUTH CANTERBURY OUTSTANDING FOOD FESTIVAL

Ten day food festival where you can scoff your way around participating eateries.



OCT

NZ SPRING SHEARING COMPETITION

Rural life on the stage where national and international shearers compete.

BOOKARAMA

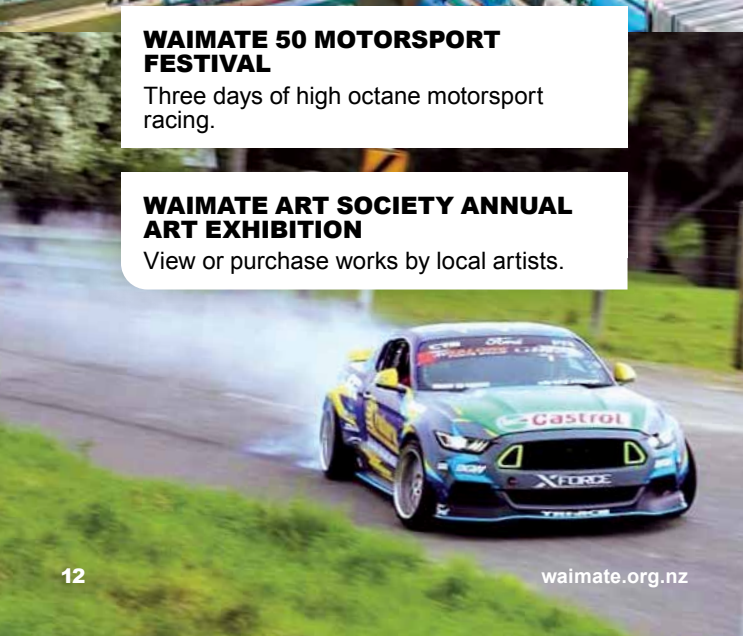
Thousands of books on offer over this week-long book sale.

WAIMATE 50 MOTORSPORT FESTIVAL

Three days of high octane motorsport racing.

WAIMATE ART SOCIETY ANNUAL ART EXHIBITION

View or purchase works by local artists.



NOV

SOUTHERN CANTERBURY A&P SHOW

Town meets country at this vibrant rural show.



DEC

WAIMATE STRAWBERRY FARE

A celebration of the humble strawberry Waimate is famous for, with over 200 stalls.

HOOK BEACH FISHING COMPETITION

Can you reel in the big one and claim the major cash prize?

WAIMATE CHRISTMAS PARADE

A colourful, festive parade celebrating the Christmas spirit.

CHRISTMAS IN THE SQUARE

A community celebration of Christmas complete with fireworks!



Check out waimate.org.nz for a complete list of events.

EVENT CALENDAR

explore walking & biking

Gunns Bush walking track

The Waimate District offers an awesome range of walking and biking tracks.

Whether you like native bush and picturesque waterfalls, gentle tracks that meander along the riverbank or steep challenging peaks that push you to the limit, there is something for all fitness levels and abilities.

So what are you
waiting for,
get amongst it!

White Horse mountain biking

icon key

Pages 16 - 33 of this guide outline the walking and biking tracks within the Waimate District, and include maps and detailed descriptions of each track.

The key below describes each icon.



WALKING TRACK



EASY HIKING TRACK



TRAMPING TRACK



ADVANCED TRAMPING TRACK



EASIEST CYCLING TRACK



EASY MOUNTAIN BIKING TRACK



INTERMEDIATE MOUNTAIN BIKING TRACK



ADVANCED MOUNTAIN BIKING TRACK



EXPERT MOUNTAIN BIKING TRACK



EXTREME MOUNTAIN BIKING TRACK



DOGS ALLOWED



DOGS ALLOWED ON A LEASH



NO DOGS ALLOWED



 MAP 1

- | | |
|-------------------------------|---------------------------|
| 1. BIG EASY TRACK | 6A. ROSEWOOD LINK |
| 2. DDT 1 | 6B. ROSEWOOD HILL |
| 3. DDT 2 | 7. WRIGGLY BEAST |
| 4. DDT 3 | 8. FILTHY ANIMAL |
| 5. WHITE HORSE WALKWAY | 9. TWISTED MONSTER |
| | 10. FLYING FALCON |

WALKING & BIKING

1. BIG EASY TRACK



DISTANCE: 6.7KM, DUAL DIRECTION

A shared mountain bike and walking track heads off to the right of the White Horse walkway through a mixture of bush and trees.

This longer route to the White Horse monument has many deviations for mountain bike enthusiasts so always take care to look out for bikers coming both ways. Downhill direction is only for less confident and/or young riders except for accessing other trails. Slow only.

2. DDT 1



DISTANCE: 0.4KM, ONE WAY

Steep, downhill single track, open at the top before dropping into the trees. Turn right soon after entering the trees to join Flying Falcon or continue straight ahead on DDT1. Downhill only.

3. DDT 2



DISTANCE: 0.78KM, ONE WAY

Flowy, bermed single track with some easily avoidable jumps and features off to the side. Crosses the 4WD track around half way, follow signposts to re-join. Downhill only.

4. DDT 3



DISTANCE: 0.38KM, ONE WAY

Short, flowy single track with some easily avoidable drops and gap jump off to the side. A short climb at the start before descending with flowing berms. A rock feature to the side at the top of the initial climb to test skills on. Downhill only.

5. WHITE HORSE WALKWAY



DISTANCE: 2.2 KM RETURN

The track climbs grassy slopes before joining an old logging track, through remnants of totara forest, emerging into modern day pine plantations.

The track then crosses over hilltop grassland to reach the White Horse monument.

Big Easy track

6A. ROSEWOOD LINK



DISTANCE: 1KM, ONE WAY

The Rosewood Link track connects Wriggly Beast with Filthy Animal. Wide and non technical. One way.

6B. ROSEWOOD HILL



DISTANCE: 1KM, DUAL DIRECTION

The Rosewood Hill track is a connecting track between the Big Easy and Filthy Animal. Wide track with a challenging climb.

7. WRIGGLY BEAST



DISTANCE: 1KM, ONE WAY

Starts with an easy flowing trail but soon changes into fun downhill with berms and jumps. Machine-built with technical jumps off to the side for the more adventurous. Downhill only.

8. FILTHY ANIMAL



DISTANCE: 1.1KM, ONE WAY

A fun, flowy, pumpy trail with technical jumps. Mostly downhill so minimal peddling. Downhill only.

9. TWISTED MONSTER



DISTANCE: 1.9KM, ONE WAY

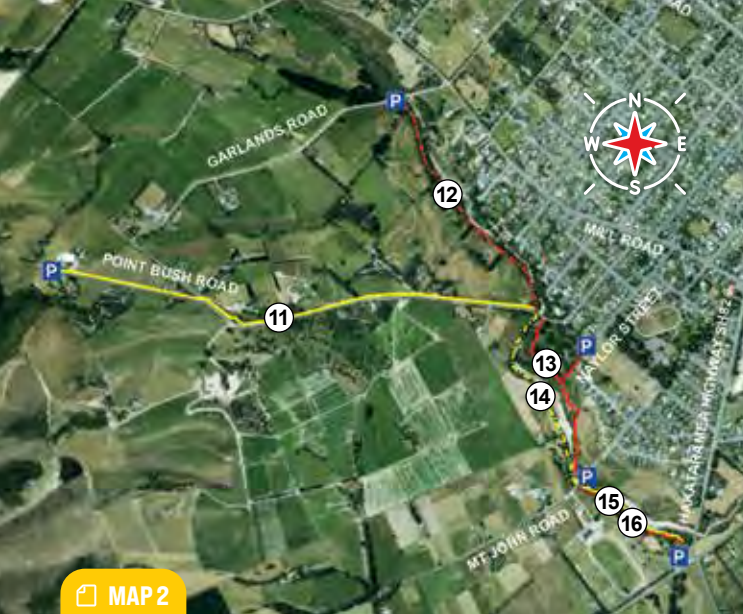
Fun, fast and flowy machine-built trail featuring well made berms, rollers and table-top jumps. Starts off with a flat, rolling section, before heading into some switchbacks and a short climb, after which the trail begins to descend.

10. FLYING FALCON



DISTANCE: 0.3KM, ONE WAY

Fast technical downhill. Gap jumps and flowing berms makes for an action packed ride. Downhill only.



11. POINT BUSH TRACK



DISTANCE: 1.8 KM, DUAL DIRECTION

Following Point Bush Road, this track links Garlands Track and Naylor's Track to the White Horse Walkway and Big Easy Tracks. The track involves a gradual climb to the carpark.

12. GARLANDS TRACK



DISTANCE: 0.95 KM, DUAL DIRECTION

This track follows the bank of the Waimate Creek. The track is relatively flat and borders semi rural landscapes, and meanders through woodland and riverbank vegetation.

13. NAYLORS TRACK



DISTANCE: 0.75 KM, DUAL DIRECTION

This flat track starts on Queen Street with access also on Naylor Street, and goes through to Point Bush Road. You can cross the road there and join on to Garlands Track.

14. ORBZ



DISTANCE: 0.76 KM, ONE DIRECTION (DOWN RIVER)

An easy but fun trail full of twists and turns to develop mountain biking skills and encourage progression. Entrance by the bridge on Point Bush Road and exit onto Mt John Road. No pedestrians.

15. BARREL DOWN



DISTANCE: 0.45 KM, ONE DIRECTION (DOWN RIVER)

Another easy but fun trail full of twists and turns with some easily rollable jumps to develop mountain biking skills and encourage progression. No pedestrians.

Join on Mt John Road by the Showgrounds entrance opposite the exit of Orbz. Turn left at the end to join the return trail Show Up/Show Down.

16. SHOW UP/SHOW DOWN

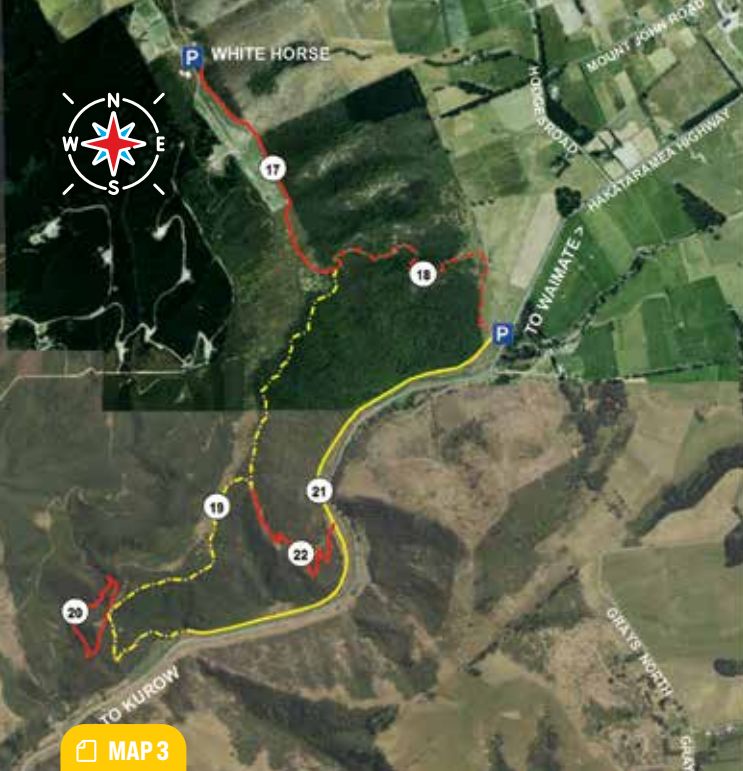


DISTANCE: 0.45 KM, DUAL DIRECTION

This trail is designed to continue developing skills on varied surfaces whilst returning to form a loop by joining Naylor's Track at Mt John Road.



Garlands track



17. WHITE HORSE LINK TRACK



DISTANCE: 1.1KM, DUAL DIRECTION

This track connects with Centrewood Park and the monument commemorating the Clydesdale horse.

18. NGAIO TRACK



TIME/DISTANCE: 35 MINUTES ONE WAY, 1.4 KM

Starting at the Studholme Bush carpark, this walking track is gentle to begin but soon turns into a hill climb. You will be rewarded at the top with amazing panoramic views.

19. BELLBIRD TRACK



DISTANCE: 2 KM, DUAL DIRECTION

This walking/Grade 3 mountain biking track goes between Railway Track and the top of Ngaio Track and passes through areas of regenerating bush.

20. WATERFALL TRACK



TIME/DISTANCE: 15 MINUTES ONE WAY, 0.54 KM

The waterfall, about 15m high, is fed by a small stream. Follow Railway Track then walk up Bellbird Track for about 15 minutes until you reach Waterfall Track.

21. RAILWAY EMBANKMENT TRACK



DISTANCE: 2.7 KM, DUAL DIRECTION

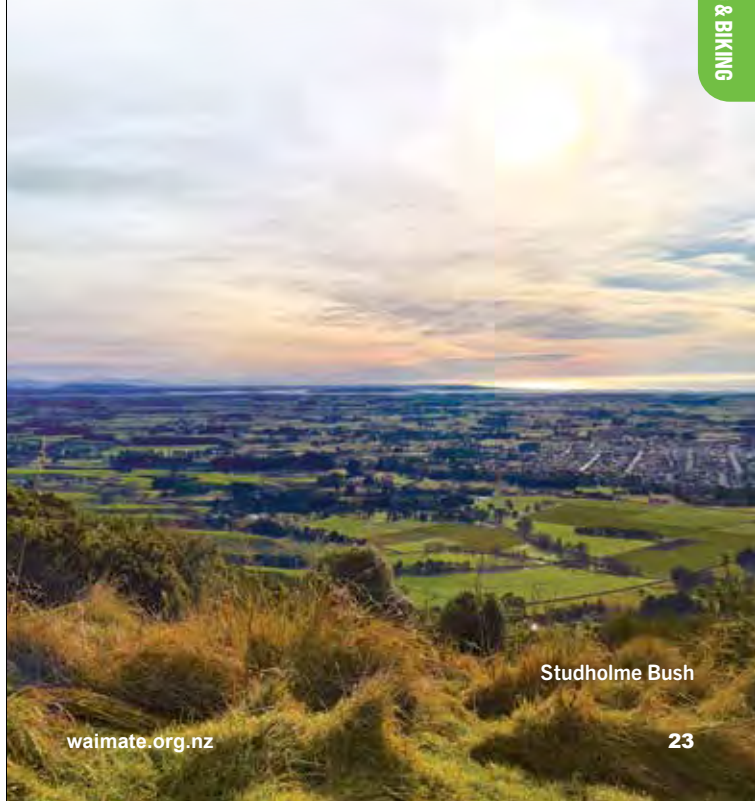
This track follows a former railway from Waimate to Waihao Forks. The 2 km section of railway embankment provides a flat track with Deep Creek on one side and wetlands and regenerating bush on the other.

22. QUAIL TRACK

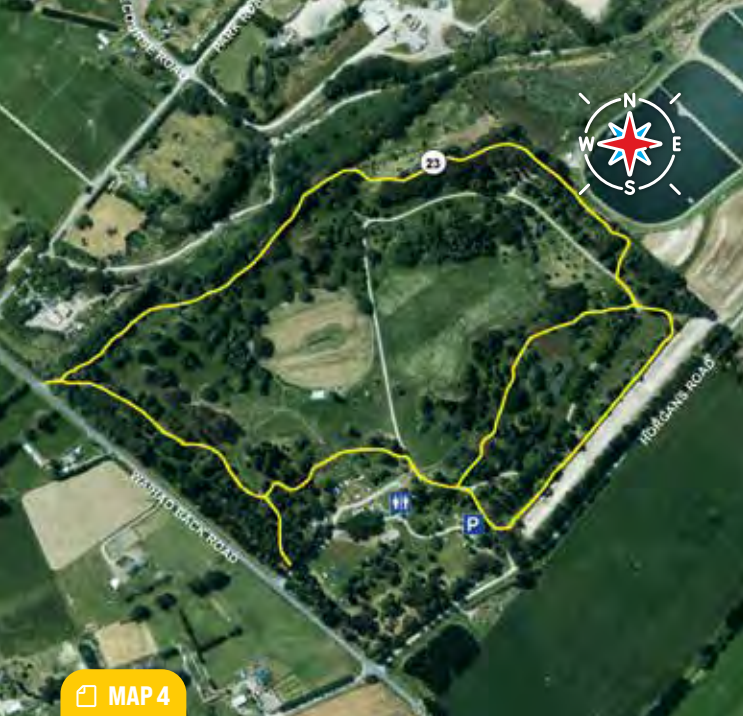


TIME/DISTANCE: 35 MINUTES, 0.87 KM

Quail Track connects the middle section of Bellbird Track with Railway Track. It provides an alternative route back to the car park.



Studholme Bush



23. KNOTTINGLEY PARK & ARBORETUM TRACK



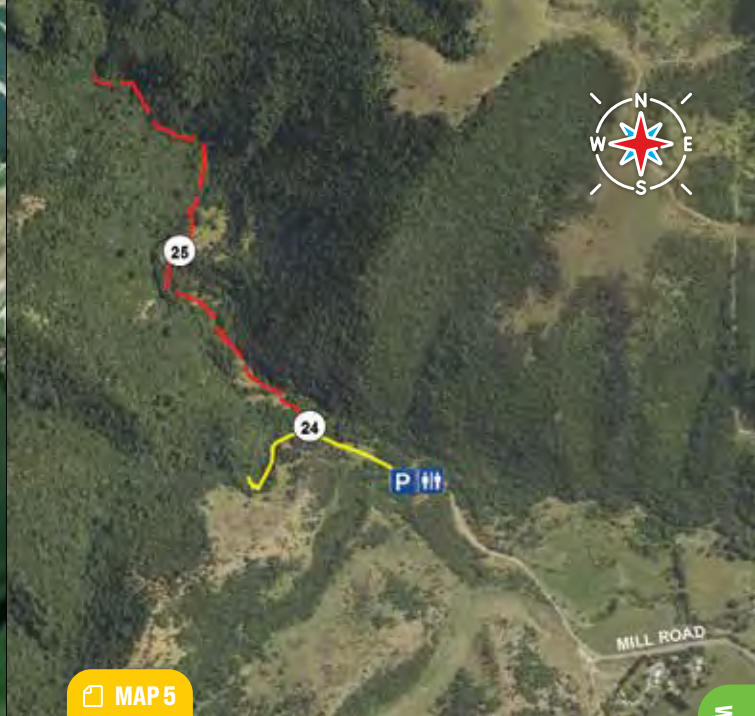
DISTANCE: 2.5 KM, DUAL DIRECTION

A flat loop track around the park and arboretum, which is underplanted with masses of bulbs.

An easy walk in parkland area with beautiful established trees. Sheep sometimes graze here, so please respect the animals and do not disturb them.



Knottingley Park



24. KELCEYS BUSH — SANDERS FALLS TRACK



TIME/DISTANCE: 20 MINUTES ONE WAY, 0.37 KM

A beautiful scenic walking track with a gentle climb and some steps to take you to a viewing platform overlooking the falls.

The pipe alongside the track, and at the falls, supplied Waimate's water from 1915 to 1932 when it was discontinued following a major flood.

A short branch off this track leads you to a lookout and seat where you get great views up the valley.

25. KELCEYS BUSH — INTAKE TRACK



TIME/DISTANCE: 40 MINUTES ONE WAY, 0.92 KM

This track goes upstream following Waimate Creek past Rock Pool weir. It crosses the creek several times so be prepared to get your feet wet.

The pipe alongside the track and the weir at Rock Pool are the remnants of Waimate's second water supply, which operated between 1926 and 1954.



MAP 6

26. WAINONO LAGOON

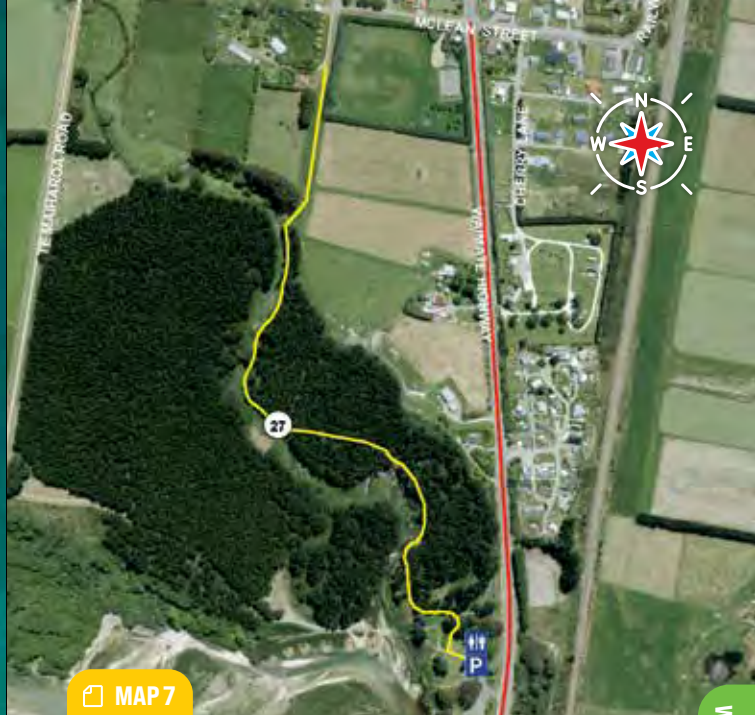


TIME/DISTANCE: 5 HOURS RETURN, 7.7 KM

Wainono Lagoon is considered a wetland of national importance and a paradise for bird watchers. There is an unmarked track that travels on the lagoon side of the stony beach all the way along the lagoon.



Wainono Lagoon



MAP 7

27. GLENAVY TRACK



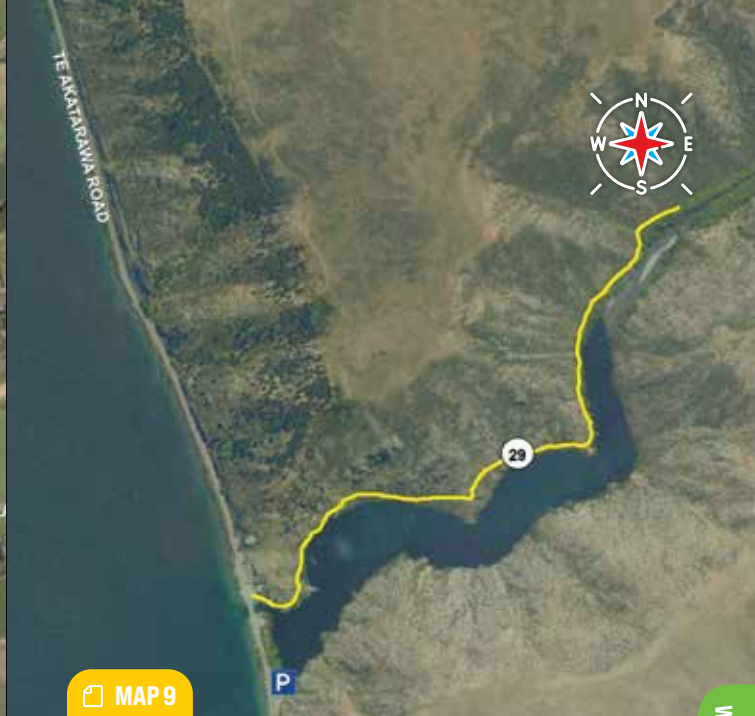
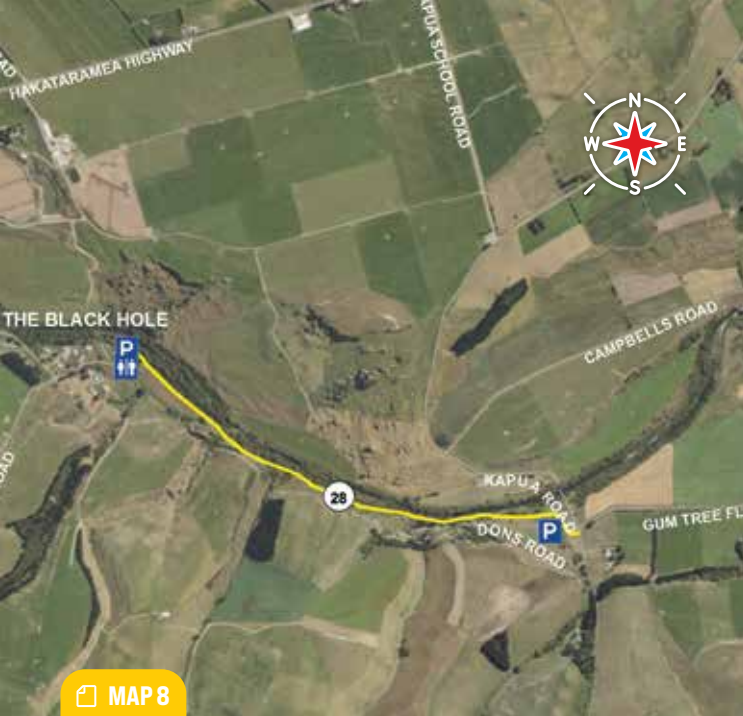
DISTANCE: 0.94 KM, DUAL DIRECTION

This flat track wanders beside a stream under a small pine plantation just off State Highway 1. There is the option of a loop circuit through the pine plantation.

The track is lined by large quantities of blackberry, which in late summer transform into a potential harvest field for walkers.



Glenavy track



28. WAIHAO RIVER WALKWAY TRACK



DISTANCE: 1.9 KM, DUAL DIRECTION

The Waihao River Walkway runs alongside the south bank of the Waihao River, between the popular Black Hole swimming hole and McCulloch's Bridge.

The walkway offers views of the nearby limestone cliffs and unique limestone outcrops. Brown trout and eels can be found in the river and there is abundant birdlife along the walkway.



Waihao River

29. DEEP STREAM TRACK



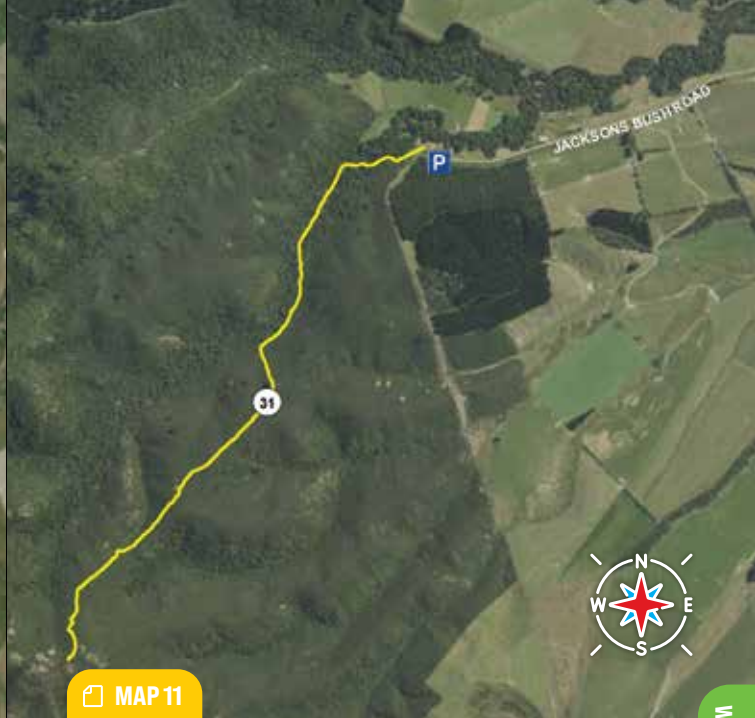
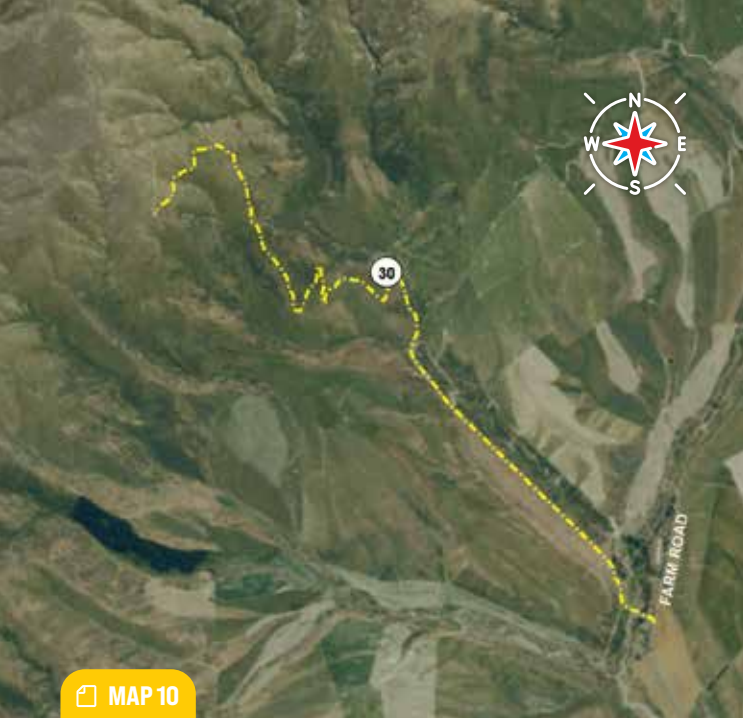
TIME/DISTANCE: 1 HOUR ONE WAY, 1.2 KM

This walking track sidles steep faces within a flooded canyon.

Plants you may see include Prostrate kōwhai, *Sophora prostrata*, which flowers in August/September, and two rare native brooms, *Carmichaelia curta* and *Carmichaelia kirkii* - both threatened species.

The walk finishes at the river delta where a shady picnic or fishing spot can be found.





30. FARM ROAD EASEMENT TRACK



TIME/DISTANCE: 2.5 HOURS RETURN, 5.4 KM

This walking/tramping track is an access easement to the Benmore Range Conservation Area.

The easement crosses a stile and follows a boundary fence directly uphill and along the top of the range to public conservation land. Users are asked to keep to the marked easement on the southern side of the boundary fence (right-hand side of the fence walking up the easement). This is a steep walk along old sheep tracks beside the fence line.

About 2 km along the easement walkers get fantastic views looking down upon Lake Ruataniwhā, Twizel and the mountains beyond.

The walk to point 1672m at the top of the Benmore Range Conservation Area takes a full day (8 – 9 hours). The New Zealand falcon/kārearea, sky lark, chukor, California quail and the New Zealand pipit/pihoihoi can all be found in the conservation area, as well as the common skink and gecko/ mokomoko.

31. HOOK BUSH TRACK



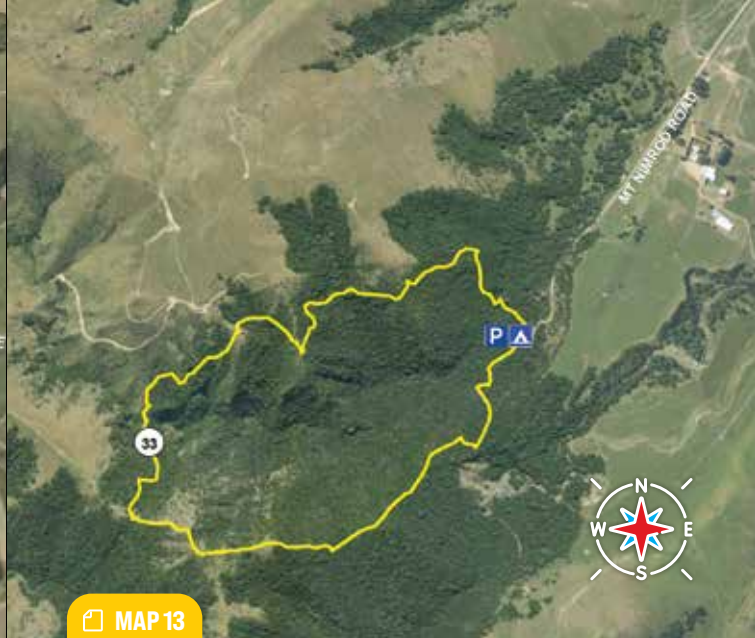
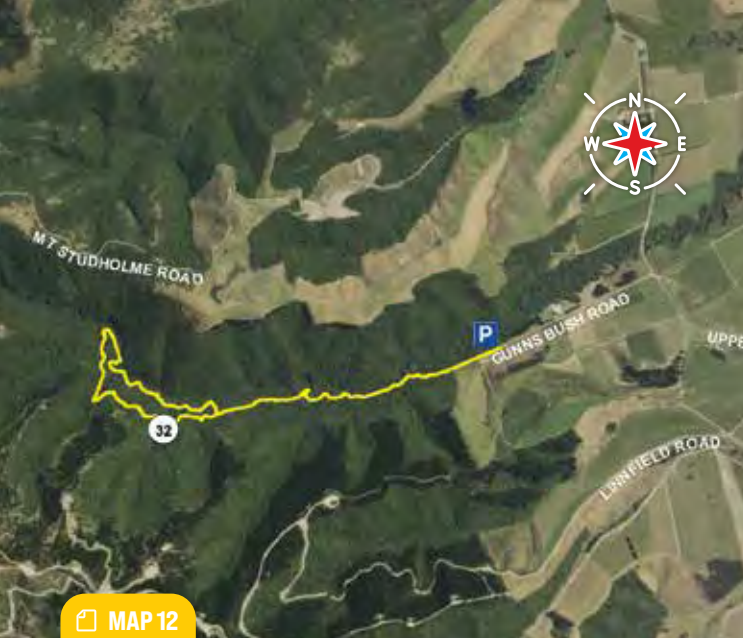
TIME/DISTANCE: 1 HOUR ONE WAY, 2.2 KM

An unmarked walking/tramping track that leads from the end of Jacksons Bush Road to a stream which is followed for a while before the track ascends to a ridge.

This pretty tributary of the Makikihi River is bordered by large kōwhai and lacebark/houhere.



Hook Bush track



32. GUNNS BUSH TRACK



TIME/DISTANCE: 1.5 HOURS RETURN, 3.5 KM

Moss grows underfoot, making the first part of this walk a magic green carpet. The walk follows the stream and then does a small loop before coming back the same way.

There are many large tree-fuchsia/ kōtukutuku which are commonly found in regenerating sites. The kōtukutuku is the largest fuchsia in the world and one of our few native deciduous trees.



Gunns Bush track

33. MT NIMROD RESERVE TRACK



TIME/DISTANCE: 2-3 HOURS RETURN, 2.9 KM

This walking/tramping track has great views and a waterfall that plummets through a rock arch.

Just beyond the camping area the loop track takes you on a clockwise circuit of the reserve. Initially it climbs steeply up out of the forest to a lookout point which gives good views out to the coast.



Mt Nimrod waterfall

explore wallabies

Waimate is famous as the "Wallaby Capital" of New Zealand! Our wildest visitors, the Bennett's Wallaby, were introduced to Waimate from Australia for the fur trade in 1874. Our dry environment and sweet bush suited the marsupials, helping them to thrive. As a result the Waimate District is infamous for these cute critters.

WHERE YOU CAN SEE WALLABIES

You can see wallabies in the enclosure at Victoria Park, Waimate. Or for an up close and personal encounter with wallabies where you can hand feed the delightful animals, visit EnkleDooVery Korna, a private sanctuary wallaby park owned by Gwen Dempster-Schouten.

You may also spot wallabies in the wild on our many walking and biking tracks.



ENKLEDOOVERY KORNA WALLABY PARK



Admire the cute tame wallabies by walking amongst, touching, feeding and photographing over 40 of the famous animals.

Eftpos or cash.

A 71 Bathgates Road, Waimate
P 03 689 7197
E jenny_dempster@hotmail.com
W waimate.org.nz/tamewallabies

explore nature



Wax-eyes at Kelceys Bush

BIRD LIFE

Nature enthusiasts will love the diverse range of bird species found in the Waimate District. Wainono Lagoon and the district's areas of native bush are home to many native birds. Some birds you will spot are royal spoonbills, New Zealand falcon, kereru, tui and bellbirds.

FOSSILS

The Hunters Hills are believed to be about 270 million years old. Towards the coast the area is full of limestone deposits that are rich in fossils.

Waimate has a number of nationally and internationally significant fossil sites at Benmore, Hakataramea and Waihao Downs.



POINT BUSH ECOSANCTUARY

A predator-proof fenced ecosanctuary, to allow our native birdlife and flora to flourish. Point Bush Ecosanctuary is a community trust - enjoy the extensive public walking and mountain biking trails with free public access at all times throughout the year.

explore the great outdoors

BOATING

Boating on the Waitaki River and in the Waimate Lakes area are popular pastimes of many kiwis. Experience the thrill of jet boating on the mighty Waitaki River with Braided River Jet Boating.

FISHING

Anglers will delight in the many popular fishing spots to catch salmon and trout (brown and rainbow). Waitaki River and Lakes Waitaki, Aviemore, and Benmore offer some of the best fishing around. The Hakataramea River is world-renowned for fly fishing. Head to the Waihao Box or the Waitaki River mouth for whitebait. Hook Beach, near Makikihi, is a popular spot for elephant fish and rig. The trout season is October to April and the whitebait season is August to November.

HUNTING

We have a range of hunting opportunities that can be accessed on public land or through private shoots. Wild game in the Hunters Hills includes wallabies, rabbits, hares, deer, goats and pigs.

EQUESTRIAN

Waimate is also renowned for its strong equestrian following. There are many ways to experience all things equestrian in the district. Go trekking over high country stations and time-worn trails, through snow-fed rivers and alongside alpine lakes.

Or ride your own horse through Knottingley Park and Aboretum and take advantage of the cross country course (permission is sought from the Waimate Pony Club before use of the jumps). There are many equestrian events held in Waimate throughout the year, which makes for a great day out for spectators and competitors.

SWIMMING POOL

The Norman Kirk Memorial Swimming Pool is an outdoor, heated pool open between October and March. There's lane swimming, aqua aerobics plus inflatable toys to provide heaps of fun. There's also a paddling pool, canteen, free public BBQ and sun shade areas.



WAIMATE EVENT CENTRE



The Waimate Event Centre offers a wide range of recreational activities, having two courts and a climbing wall.

The venue boasts meeting and function rooms and a commercial kitchen/bar.

A 15 Paul Street, Waimate

P 03 689 7771

E waimateeventcentre@waimatedc.govt.nz

W waimatedc.govt.nz



SEE & DO

explore parks & reserves

The Waimate District has spectacular public parks, reserves, an arboretum, and a wetland.

WAINONO LAGOON

Take in the tranquility of Wainono Lagoon. This area hosts a diverse range of wetland birds, fish and native plants.

VICTORIA PARK

Victoria Park has something for everyone. Take a walk in the beautifully manicured gardens, pack a picnic lunch, or enjoy the expansive playground for the kids. There is also a disc golf course, netball courts, a velodrome and an outdoor bowling green. While there, be sure to visit the animal enclosure housing different bird species and some of Waimate's infamous wallabies. The park also has a campground with modern ensuites and cabins, making it the perfect place for large groups or a weekend getaway.

KNOTTINGLEY PARK AND ARBORETUM

This is a popular spot for a range of recreational activities including walking, biking, cricket and horse riding. The park also has a campground with full facilities which have recently been upgraded, all set amongst a beautiful mature arboretum.

SEDDON SQUARE

Situated in the heart of Waimate this Edwardian-era park is a peaceful place to sit and relax or enjoy a picnic. The band rotunda built in 1911, is the site for many fantastic community events and entertainment.

WILLIAM BOLAND PARK

There's a skateboard park, swings, rope climbing and a BMX track.

WAIMATE DOG AND AGILITY PARK

The Waimate Dog and Agility Park is the place to take your dog to play, exercise or socialise with other dogs. Enjoy the fully fenced one acre site beside the Southern Canterbury A&P Association grounds at your leisure with your furry friend. Open daily from 8am to 6pm.

Wainono Lagoon

explore destinations



View from the Hunters Hills

ST ANDREWS

The northern entrance to St Andrews (north-east of Waimate) has ruins of a historic granary and an information board nearby telling more of the history of this area. The St Andrews Domain has a camping ground with full facilities.

MAKIKIHI

Makikihi is close to Hook Beach, one of the district's best fishing beaches. Makikihi itself is home to the famous Makikihi Fries (they're delicious!).

GLENAVY

On the northern bank of the mighty Waitaki River, near where the river meets the ocean, is the anglers' mecca – Glenavy.

MAUNGATI & WAIHAO DOWNS

Maungati offers an exceptional collection of Māori rock art. It's a must-see if you're in the area. Waihao Downs is also famous for fossils, including those of the biggest penguin on record – the 1.3m tall Kairuku, who lived around these parts 27 million years ago.

HAKATARAMEA

Experience some truly isolated high country splendour by driving up the Hakatarama Valley, signposted from the Hakatarama River bridge.

WAIMATE LAKES AREA

Lakes Waitaki and Aviemore are part of the massive Waitaki hydro system which powers much of the South Island. The lakes are a stunning environment in all seasons, from the rich colours of autumn, into the snowy hills of winter, and searing summer days. With a number of camping grounds along the shores of Lake Aviemore, it is the perfect place for your seasonal camping experience.



Waimate golf course

The district has two beautiful golf courses – Waimate and Maungati. You're assured of a warm country welcome at both.

WAIMATE GOLF CLUB

The Waimate Golf Club is situated on the western outskirts of Waimate. The course has great views of the surrounding countryside, is undulating and tree lined with wide fairways which are beautifully maintained.

The golf course is of incredibly high quality for a small town course and is the envy of many out-of-town players. Visitors are always welcome.

MAUNGATI GOLF CLUB

Maungati Golf Club is a picturesque 9-hole, 18-tee golf course situated at 700 Craigmore Valley Road, approximately 54 km north of Waimate.

The quiet, calm and peaceful links are nestled into the valley with extinct volcano Mt Horrible at the northern end and the Hunters Hills at the southern end, with the Little Pareora River flowing down the western edge of the course.

DISC GOLF

Enjoy a game of disc golf, located at the stunning Victoria Park. The 9 basket course is set amongst beautiful established trees, and is a great game for all the family.

WAIMATE GOLF CLUB



Waimate Golf Club is an idyllic 18 hole - par 72 - 5523 metre course, and one of the finest examples of parkland golf in the South Island.

Visitors always welcome!

Green Fees

- \$30 per round for members of an affiliated club
- \$40 per round for non-members of an affiliated club
- Discounts available for groups of eight or more.

A Browns Road, Waimate
P 03 689 7009
E waimategolf@gmail.com

WAIMATE DISC GOLF



The 9 basket course is a great game the entire family can enjoy. Discs available to hire or purchase at Waimate Outdoors.



A Victoria Park, 22 Naylor Street, Waimate
W waimate.org.nz/disc-golf

explore culture & heritage



The Cuddy

HISTORIC SITES

The district's first white settler, Michael Studholme, arrived in 1854 after making a peaceful accord with local chief Te Huruhuru. Their first meeting is immortalised on the painted silos in Waimate.

Descendants of Te Huruhuru and other Māori from those days still have strong connections to Waimate. Their hapu, Te Runanga o Waihao, is based at the Waihao Marae in Morven. The Studholme family continue to farm at Te Waimate Station. Michael Studholme's first home, the Cuddy, is still on the property.

FIRST PEOPLE - THE WAITAHA

The Māori people of the Waihao trace their tipuna (ancestors) back to the arrival of two waka at the mouth of the Waihao River. A semi-permanent settlement was established there.

Two of the women of the tribe, Waiariki-o-aio and Tapuiti, particularly loved the sweet flavour of the Hao eel of the Waihao River and it is said that this is the reason that the Waitaha people stayed here.

MĀORI ROCK ART

An incredible collection of Māori rock art can be seen in limestone outcrops at Maungati.

Images on rock include sailing ships, animals and people. At Maungati you can see images of the huge Te Manunui – the great bird, along with fish and moa.

HISTORICAL OUTINGS

Take a stroll around Waimate for historical insights and fantastic photo opportunities.

There's also a self-guided walk in the Waimate Old Cemetery, where stories told by the headstones trace the early settlement of our district.

TED'S BOTTLE AND SCULPTURE

A bottle of beer has remained unopened behind the bar of the Waihao Forks Hotel since World War II.

The bottle was left there by Private Ted d'Auvergne when he set off for war in January 1940. He told the publican he would drink it when he got back. Unfortunately, Ted was killed in action in Crete in 1941 and never made it back.

The bottle remains as a unique memorial to Ted, and all the young New Zealanders who lost their lives during the war.

A life sized Ted d'Auvergne sculpture sits outside the Waihao Forks Hotel to honour all rural soldiers who left small town New Zealand for war and never returned.

Information on the plinth beside the platform tells the full story of Ted, as well as other stories during the war of local men.

BUSHTOWN WAIMATE INC.



SEE & DO

Bushtown Waimate is a 7 hectare heritage site depicting the Te Waimatamate Bushman and Early Settlers era and mighty totara forest.

To book a visit, guided tour, plant a totara tree, Steam Up Days, miniature rail - visit the Bushtown website and Bushtown Facebook page.

A Dobson Street, Waimate
P Secretary 021 576 868
E bushtown.waimate@gmail.com
W bushtownwaimate.co.nz



Preserving the Past for the Future



Waimate Museum & Archives

The Waimate Museum and Archives are home to thousands of items and images telling the stories of the Waimate District.

There are tangata whenua and moa displays as well as a large selection of horse-drawn vehicles.

The excellent Archives are used by researchers and genealogists from around the globe.



MUSEUM

H Tuesday to Friday: 10am to 3.30pm
(open by appointment outside these hours)

A 28 Shearman Street, Waimate

P 03 689 7832

E admin@waimatemuseumandarchives.org.nz

ARCHIVES

H Tuesday to Thursday
(by appointment only)

P 03 689 7842

E archives@waimatemuseumandarchives.org.nz



explore White Horse lookout

Waimate District's rich agricultural history is celebrated by the iconic White Horse on the hill overlooking the town and coastal farmlands.

The White Horse is a landmark tribute to working horses in particular Clydesdales, and was constructed in 1968 by Norman and Betty Hayman.

It took three months to lay 1220 concrete slabs and the 2 ½ ton head was precast in Ron Hutt's yard.

The final cost was \$240, met by donations from 'old time' farmers, teamsters, and others who admired the Clydesdale horse.

The White Horse can be easily accessed on foot or mountain bike. You can also go by car, a 20 minute drive sign posted from the intersection of Mill Road and Queen Street, Waimate.

There are two options for walking, both require a good level of fitness, or just take it slowly and stop when you need to. Refer to the walking and biking section of this guide for more detailed information about the tracks.

It is a fantastic spot to take in the views, east to the Pacific Ocean and west to the mountains.

SEE & DO



View from the White Horse Lookout

explore arts & crafts

There are many talented artists that reside in the Waimate District. Art works can be seen throughout the district in many forms, from striking silo art and colourful murals to bronze statues and sculptures. Visit the Waimate Art Society which hosts exhibitions showcasing our local artists, or for some performing arts, enjoy a live performance at the theatre.

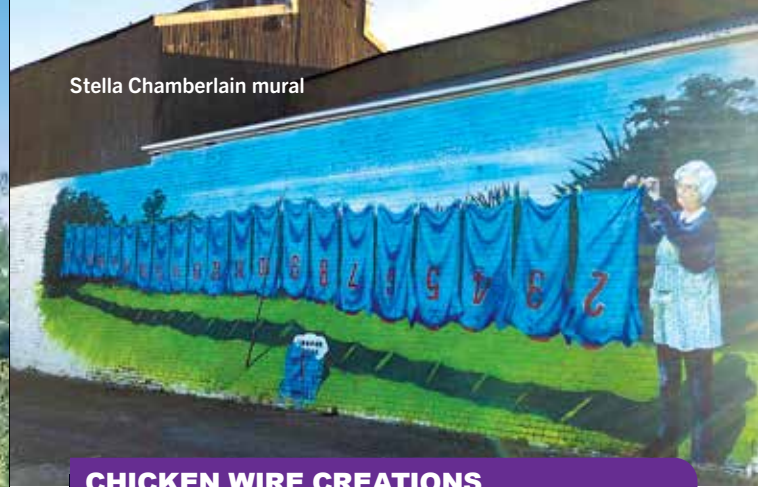
WAIMATE THEATRE COMPANY

Thespians and other like-minded people come together to produce a wide range of different productions – musicals, comedies, theatre restaurant, children's productions, murder mysteries, and choral events.

REGENT THEATRE

This movie theatre is run by a group of dedicated volunteers and can boast a good line-up of mainstream movies. Caters for all tastes, and is also a great way to fundraise for local charities.

Stella Chamberlain mural



CHICKEN WIRE CREATIONS



Amazing wire sculptures set in beautiful unique gardens for all the family to enjoy. Buy or commission a unique sculpture of your own. Please contact Michelle to prearrange your visit.

A 4 King Street, Waimate
P 021 024 76923
E michellejaynENZ@hotmail.com
W chickenwirecreations.com

COUNTRY CRAFTS MAKIKIHI



Country Crafts is a co-operative run by a group of volunteers who make crafts and gifts.

Open Tuesday to Saturday
10am to 4pm.

Look for the scarecrow.

A State Highway 1, Makikihi
E jgacmcottle@gmail.com

INKY DINKY FINGERS



Your one stop shop for handmade cards and crafts.

Classes available to learn the art of card-making and scrapbooking.

A 39 Queen Street, Waimate
P 021 087 43600
E inkydinkyfingers@gmail.com
W inkydinkyfingers.swifflly.nz

Chicken Wire Creations

explore silo art



Be wowed by the sheer scale of the impressive street art on the towering grain silos in the main street of Waimate. The four images depict the town's past. Talented local artist Bill Scott created these, along with many other murals throughout the town of Waimate.

CHIEF TE HURUHURU AND MICHAEL STUDHOLME

The artwork of Chief Te Huru Huru and Michael Studholme imagines the pair greeting with a traditional Māori hongi.

PRIME MINISTER NORMAN KIRK

New Zealand's fourth Labour Prime Minister, Norman Kirk is described as a person of imagination, faith and energy.

ERIC BATCHELOR

One of the Allies' greatest soldiers in WW II, Eric was twice awarded the Distinguished Conduct Medal for bravery.

DR MARGARET CRUICKSHANK

The first woman GP in New Zealand, Margaret was adored by the Waimate community. During the 1918 influenza pandemic she succumbed to the disease, after continuing to visit and care for her patients.

explore shopping

The Waimate District has a great range of shops on offer if you are in need of some retail therapy. Explore the weekly Community Market in Seddon Square, go treasure hunting in the second hand shops or check out the fabulous range of destination shops with everything from boutique clothing and stylish giftware to outdoor equipment.



AMANDA'S BRIDAL & FASHION



Mandy has a wide range of fashion from wedding gowns to special occasion and every day wear. Fabulous range of sizes and prices.

A 29 Queen Street, Waimate
P 03 689 8188
M 027 467 0064
E mandytags@hotmail.com
W amandasbridalandfashion.co.nz

SEE & DO

BACK PADDOCK GARDEN AND GIFTS



Garden centre, gift shop and cafe, with plenty of parking available. Open Wednesday to Sunday.

A 40 Cashel Street, Waimate
P 027 689 8589
E backpaddockgardenandgifts@gmail.com
W backpaddockgardenandgiftsnz.com

LOOT JEWELLERS & STRINGBEAN DESIGN



Loot Jewellers has a manufacturing jeweller onsite to design and create jewellery for all occasions. Also offering repairs, engraving and giftware.

Purchase a ring and receive the first sizing free of charge. Purchase an item that can be engraved, and receive the engraving free of charge (up to 20 characters).

StringBean Design is a boutique children's clothing range. Designing quality, affordable clothing for kids, with style and comfort in mind. Sizes ranging from newborn to 8 years.

A 82 Queen Street, Waimate
P 03 689 7951
E lootjewellers@gmail.com

REWIND



Shop preloved, labelled clothing at affordable prices; located in Waimate's original post office building.

A 75 Queen Street, Waimate
P 027 751 8948
E info@rewindshop.co.nz
W rewindshop.co.nz

TACKLESHOP LEISURE AND HOME



We are Waimate's one stop Outdoors, Camping and Watersport supplies shop plus Home Heating Specialists, and so much more!

A 68-70 Queen Street, Waimate
P 03 689 8400 or
027 221 4346 a/hrs
E tackleshop@xtra.co.nz
W tackleshop.co.nz

THE QUIRKY MAGPIE



We have an ever-changing collection of treasures – new, vintage and locally made. Swoop on in and say 'hi'.

A 42 Queen Street, Waimate
P 03 689 2686
E hello@thequirkymagpie.co.nz
W thequirkymagpie.co.nz

VALUE VILLAGE



We sell a little bit of everything at a super low price.

A 43 Queen Street, Waimate
P 027 319 6835
E valuevillagewaimate@gmail.com
W valuevillagewaimate.com

WAIMATE COMMUNITY MARKET



Fresh local produce, repurposed, and hand crafted goods. Including in-season fruit and vegetables and lots more. Proceeds support community initiatives. Every Saturday from 9am to 12 noon.

A Seddon Square, Waimate
P 027 337 7933
E wcmisecretary@gmail.com

WAIMATE OUTDOORS



Fishing, hunting, gardening and pet needs. Also bikes, mowers and ball sports.

Opening hours:
Monday to Friday 9am to 5.30pm
Saturday 9am to 12pm

A 107 Queen Street, Waimate
P 03 689 7950
E waimateoutdoors2019@gmail.com

explore food & drink

You will be spoilt for choice with the Waimate District's fabulous selection of eateries. Whether you like a hearty pub style meal, takeaways in the park, or a fine dining experience that serves up fresh contemporary cuisine, the Waimate District has something to tempt any tastebud.

The great selection of pubs and bars offer a place to relax and catch up for a drink with friends and family.

Coffee lovers won't be disappointed with the many cafes in the district serving up aromatic coffee and delicious food.



BACK PADDOCK GARDEN AND GIFTS



Garden centre, gift shop and cafe, with plenty of parking available. Open Wednesday to Sunday.

A 40 Cashel Street, Waimate
P 027 689 8589
E backpaddockgardenandgifts@gmail.com
W backpaddockgardenandgiftsnz.com

CUPS & CONES GELATO



A delicious selection of gelato made in-house from locally sourced products.

A pop-up shop open during summer.

A Queen Street, Waimate
P 03 689 1413
E info@thewaimate.co.nz
W thewaimate.co.nz

EL PASO DAIRY



Your local 7-day convenience store for all your dairy needs.

Open daily from 7am to 9pm.

A 41 Queen Street, Waimate
P 03 689 7292
E nettaikman@gmail.com



FISHTAIL RESTAURANT



Fishtail offers authentic Indian cuisine with an extensive traditional menu. There is a wide variety of starters and mains - with your choice of chicken, lamb, seafood or vegetarian with breads and much more. You will get completely lost in the fresh herbs and spices.

Opening hours:

Tuesday 4.30pm to 9pm

Wednesday to Sunday:

Lunch 12pm to 2.30pm, Dinner 4.30 to 9pm

A 73 Queen Street, Waimate

P 03 971 9292

E info@fishtail.co.nz

W fishtail.co.nz



KEBAB KING



We offer a variety of traditional Turkish grill meals, kebabs, pita pockets, salads, vegetarian meals, mezzes and many more!

Eat in or take away.

A 45 Shearman Street, Waimate

P 03 264 9191

E kebabking233@gmail.com



MAKIKIHI COUNTRY HOTEL



Makikihi Country Hotel offers premium and relaxed dining options. Our menu options are prepared using fresh produce, with most things prepared in house.

You'll find something to tempt your taste buds from traditional pub fare, a range of gluten free options, kids menu and a fantastic restaurant only menu.

A 36 Main Road, Makikihi

P 03 689 5709

E makihicountryhotel@gmail.com

W makihicountryhotel.com



NOSH ROADSIDE GOURMET



Situated midway between Timaru and Oamaru. Ample parking, wheelchair access, WiFi, Paywave, indoor and outdoor seating. Come and see probably the most photographed food cabinets in NZ! Try some of our delicious fare (made on-site) and refreshing beverages. See you soon!!!

A 2412 Waimate Highway (cnr SH1 & SH82), Makikihi, 7924

P 03 689 7229

E noshcafe@icloud.com

W Nosh-roadsidegourmet.co.nz



ST ANDREWS STORE



Perfectly located on State Highway 1 with plenty of parking. We offer our Top Taste chicken n chips, pies, freshly made sandwiches, paninis & croissants, cold & hot drinks, milkshakes and scoop ice cream. Tuesday to Friday 7am to 6pm. Saturday & Sunday 10am to 5pm.

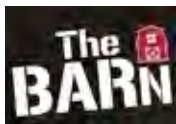
- A** 32 Waimate Highway,
SH 1, St Andrews
P 03 612 6280

THE BARN



Warm and welcoming, a perfect place to meet for delicious food, coffee and a fully stocked bar. Open 9am to late. Closed Mondays.

- A** 25 Queen Street, Waimate
P 03 689 6010
E thebarnwaimate@gmail.com



THE ROYAL TAVERN



Join the locals for a meal in our cosy restaurant or come and soak up the sun in our beer garden. Our Liquor Centre is open daily until 9pm for your convenience.

- A** 30 Shearman Street, Waimate
P 03 689 8041
E royal.tavern@xtra.co.nz

THE TOWN FRIAR



Owners are the New Zealand Chip Group Regional Winners 2013 and 2017.

Their takeaway business introduces a cafe/eat in option. Menu includes - Fresh Fish and Chips - Gourmet Burgers, soft drinks. Open most days.

Motto - Fresh is best

- A** 37 Queen Street, Waimate
P 03 689 8647
E thetownfriar@gmail.com

THE WAIMATE BAKERY



Located in a historic Waimate building that has been lovingly restored to a modern and inviting bakery and café. The Waimate Bakery offers a huge selection of gourmet pies, sandwiches and salads, as well as pastries and sweets which are all made daily by our bakers.

With a spacious outdoor seating area and playground, it is the perfect meeting place for your daily coffee. Breakfast served until 1pm. We also offer a range of freshly baked artisan breads.

Opening hours:

Monday to Sunday 6am to 6pm

- A** 56 Queen Street, Waimate
P 03 689 1413
E info@thewaimate.co.nz
W thewaimate.co.nz



THE WAIMATE KITCHEN & BAR



Located in an iconic South Canterbury building originally established in 1861. An elegantly designed restaurant, in a spacious environment with a modern feel.

Open daily with lunch menu from 11am to 2pm.

Pizza menu available all day for dine in or take away.

Evening menu available from 5pm.

Happy hour specials every Friday from 4pm to 6pm.

Opening hours:

Monday to Sunday 11am to late

A 18 High Street, Waimate

P 03 689 1413

E info@thewaimate.co.nz

W thewaimate.co.nz



WAIHAO FORKS HOTEL



Country hotel just out of Waimate on State Highway 82. Great food, drinks and hospitality with a country feel.

Family owned, with a beer garden. Great spot to take the kids, with plenty of room to run around in the enclosed outdoor area.

Come and look at the famous Ted's Bottle and statue of Ted, and hear the World War II story behind them!

A State Highway 82, Waihao Forks

P 03 689 2814

WAIMATE TOWN AND COUNTRY CLUB



Bistro, takeaways, 8 gaming machines, 2 free pool tables, snooker table and bottle store. Plus join in on the sporting competitions. All welcome to dine (alcohol can only be served to members).

New members welcome! Come in and say hello.

Bistro Hours:

Friday 12pm to 1.30pm & 5.30pm to 8.30pm

Saturday 5.30pm to 8.30pm

A 14 John Street, Waimate

P 03 689 8501

E wtetc@xtra.co.nz



explore accommodation

The Waimate District has a great selection of accommodation options to suit all genre of traveller.

There is a wide range which includes hotels, motels, glamping, backpackers, camping grounds, B&B's and farmstay options. From hilltop glamping to a cozy cottage retreat, there is something for everyone.



KNOTTINGLEY PARK AND ARBORETUM



Set in a park of old exotic trees, Knottingley Park and Arboretum has power and tent sites, recently renovated and upgraded kitchen facilities, showers, toilets and laundry. There is a playground, walking and biking trails in the park, plus it is a pet friendly camp!

A Waihao Back Road, Waimate
P 027 439 2759
E camping@waimatedc.govt.nz
W waimatedc.govt.nz

ST ANDREWS RECREATION RESERVE



A large campground with full facilities including kitchen, laundry, toilets and showers. Plenty of space with 10 power sites and numerous non-power sites.

A St Andrews Domain, St Andrews
P 027 439 2759
E camping@waimatedc.govt.nz
W waimatedc.govt.nz

VICTORIA PARK MOTOR CAMP



Set in Victoria Park in the heart of Waimate, within walking distance of shops and the swimming pool. Ensuite or basic cabins, tent sites, power sites, kitchen, shower and laundry facilities.

A Naylor Street, Waimate
P 027 439 2759
E camping@waimatedc.govt.nz
W waimatedc.govt.nz

WAIMATE LAKES AREA CAMPING RESERVES



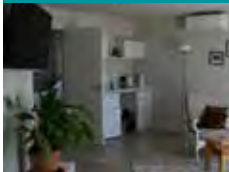
Seasonal lakeside camping (September to May) set amongst stunning scenery, popular with people who enjoy spending recreation time in and around the water. Toilet facilities, recycling options, and non-powered sites on the shores of Lake Aviemore.

Located at:

- Fisherman's Bend
- Briar's Gully
- Te Akatarawa
- East and West Waitangi

P 027 439 2759
E camping@waimatedc.govt.nz
W waimatedc.govt.nz

AHAVA BED & BREAKFAST



Luxurious, private, quiet apartment offering great views. Spacious and comfortable with wet-floor bathroom.

Suitable for people with mobility challenges. Breakfast included.



A 16 Mary Street, Waimate
P 021 055 6755 or
027 351 1945
E contact@ahavabnb.nz
W ahavabnb.nz

GLENNAVY'S WAITAKI RIVER MOTOR CAMP



A hidden gem.

Unlimited WiFi. Fully equipped kitchen, tv, powered sites, tent sites, cabins, self-contained units. Walk to river and tavern.

A 7-9 Cherry Lane, Glenavy
P 03 689 2856
E glenavymotorcamp@gmail.com
W waitakimotorcamp.co.nz

GUNNS BUSH CAMP



Nestled in 140 hectares of beautiful native forest, the facilities are perfect for groups who want an exclusive location, with up to 104 bunk beds and plenty of room for camping.

A 36 Gunns Bush Road,
Hunter, RD 8, Waimate
P 027 688 0945
E gunnsbush@gmail.com
W gunnsbushcamp.co.nz

Lake Aviemore

KELCEYS BUSH HOLIDAY PARK



Hidden gem, close to local walkways, get away from it all in this picturesque rural setting.

A 677 Mill Road, Waimate
P 027 241 0371
E kelceysbush.hp@gmail.com

KINGSWOOD MOTELS



All of our 12 units are newly renovated. 6 studios, 2 bedsits and 4 - 2 bedroom units. All units have cooking facilities apart from the 2 bedsits which have a kitchenette. All units are self contained. Unit 7 - 2 bedroom, is our one luxury unit with a spa bath and lazyboy leather lounge, also with oven (as seen above).

We have free WiFi, fibre here soon for Netflix with your own login, Sky 50+ channels.

Continental breakfast available on request and off-street parking for every unit.

Clean, affordable and only a 5 minute walk to local cafes, dining and shops.

A 16 Timaru Road, Waimate
P 03 689 8022 or 0508kingswood or 027 694 5633
E kingswoodmotels@gmail.com
W kingswoodmotels.com

MAKIKIHI COUNTRY HOTEL



The Makikihi Country Hotel offers guests quality, affordable country accommodation, and pride themselves on having just the right room to fit your needs. The hotel has been renovated and offers you all the modern amenities and conveniences you expect coupled with the architectural charm of the twenties.

A 36 Main Road, Makikihi
P 03 689 5709
E makikihicountryhotel@gmail.com
W makikihicountryhotel.com

MT NIMROD PODS



Mt Nimrod Pods are eco-friendly 'off-the-grid' glamping pod cabins set up as your private campsite complete with wood-fired hot tub and fire pit.

A 41 Mt Nimrod Road, RD14,
Cave 7984
P 03 614 3725
E gandvpatterson@farmside.co.nz
W mtnimrodpods.com

WAIMATE LODGES

Set in the heart of Waimate, the Waimate Lodges has accommodation for everybody. In the newly renovated Nunnery we have plush queen rooms on the ground floor, with our luxury backpackers rooms upstairs. Need a little more space? Dotted around the property we have our custom built 2 bedroom lodges perfect for large families, bridal parties or family reunions.

A 5 Timaru Road, Waimate
P 03 689 6221
W thewaimate.co.nz

Waimate
Lodges

waimate.org.nz

WAIHAO FORKS HOTEL



Country hotel just out of Waimate on State Highway 82, offering affordable accommodation. Comfortable rooms available as well as parking for motorhomes overnight. Great food, drinks and hospitality with a country feel.

Family owned, with a beer garden. Great spot to take the kids, with plenty of room to run around in the enclosed outdoor area.

Come and look at the famous Ted's Bottle and statue of Ted, and hear the World War II story behind them!

A State Highway 82, Waihao Forks
P 03 689 2814

THE MATCHBOX LUXURY GLAMPING



Luxury glamping only 15 minutes from Waimate. Stunning 360 degree views, hot tub, fire pit and kitchen. Relax and unwind!

A 244 Broad Gully Road, Morven, Waimate
P 027 428 8143
E hello@canopycamping.co.nz
W canopycamping.co.nz/matchbox

explore camping

Camping is a time-honoured tradition for many Kiwi families, and the Waimate District has camping grounds in some of the most spectacular locations you will find anywhere! There are loads of camping options available with everything from a peaceful lakeside pozzie, native bush retreat to a modern self-contained unit.

WAIMATE LAKES AREA CAMPING

You'll find five serviced and many non-serviced camp sites along the shores of Lake Aviemore, which are particularly popular for those people who enjoy spending their recreation time in and around water. They are open from September to May.

VICTORIA PARK MOTOR CAMP

Great camping, providing full campground facilities in an outstanding location that is within walking distance of the Waimate town centre. This family friendly park features superb garden settings, animal enclosures (including wallabies), disc golf, a velodrome, playground and BBQ area.

KNOTTINGLEY PARK AND ARBORETUM

Knottingley Park and Arboretum is set in a magnificent 36 hectares of old exotic trees in a peaceful setting, located 2km from Waimate. Providing full campground facilities which have recently been upgraded, the park also has a playground along with great walking and biking tracks to enjoy.

Waimate Lakes Camping area

For further information on Department of Conservation campsites and reserves head to doc.govt.nz.

ST ANDREWS RECREATION RESERVE

A large grass campsite with full campground facilities, located off the main road just south of St Andrews at the St Andrews Domain. Plenty of space with 10 power sites and numerous non-power sites. A true kiwi camping experience.

MORVEN CAMPING GROUND

Morven Camping Ground has 12 power sites and 50+ non power sites. There are toilets, a kitchen, playground and tennis courts, however there are no showers.

MT NIMROD RESERVE

A quiet Department of Conservation campsite on the eastern flank of the Hunters Hills. There is a 3.5km forest walk to a podocarp forest remnant. Campervans are permitted with a campsite pass. However, dogs are not allowed.

OTAIO GORGE

This Department of Conservation reserve is set in pockets of native bush beside the upper reaches of the Otaio River. There are deep pools for fishing or swimming, plus a walking track. As well as campsites, fireplaces and flush toilets are also available.

freedom camping

Freedom camping is allowed at several sites with a few rules. Campers must be in self-contained units (with toilet, shower, and grey water storage).

SITES

- Galletlys Road, St Andrews
- Gunn's Bush, Lower Hook
- Hakataramea River, McHenrys Road, Hakataramea
- Waihao Box

DUMP STATIONS

There is a public dump station located on Hillary Street. Refer to town map.

RECYCLE

Please recycle responsibly using the recycling bins throughout the district.

PUBLIC TOILETS

Please use public toilets – not the bush, parks or reserves! Refer to maps.



dog friendly district!

The Waimate District has loads of dog friendly places from walking tracks to accommodation options!

WHERE TO STAY WITH YOUR DOG – Dog friendly camp grounds

- Knottingley Park and Arboretum
- Victoria Park Motor Camp
- St Andrews Recreation Reserve
- Morven Camping Ground
- Fisherman's Bend
- Briar's Gully
- Te Akatarawa
- Waitangi East
- Waitangi West
- Glenavy's Waitaki River Motor Camp
- Kelceys Bush Holiday Park

Camp rules may vary from site to site, so please ensure you follow the camp rules regarding dogs that apply to each place.

WHERE TO EXERCISE YOUR DOG – Parks and walking tracks

- **Waimate Dog and Agility Park**, 46 Hakataramea Highway, Waimate
A purpose built park that is fully fenced. Open daily from 8am to 6pm.
- **Victoria Park**, Naylor Street, Waimate
Explore the beautiful gardens and walking track around Victoria Park with your dog.
- **Knottingley Park & Arboretum**
Wander through the mature arboretum. The expansive dog exercise area is the perfect place to walk your dog.

Lots of our amazing walking tracks allow dogs. To find out which tracks you can explore with your dog, refer to the walking and biking section of this Guide.

To ensure the safety and enjoyment of all users, please ensure your dog is under full control at all times. When not in a designated dog exercise area, all dogs must remain on a lead. Please also remember to carry a bag and clean up after your dog.

To learn more go to waimatedc.govt.nz/environment-waste/dogs

real estate



PROPERTY BROKERS

Property
Brokers

For local expertise in everything real estate. Talk to our team first.

A 76 Queen Street, Waimate
P 03 689 7171
E waimatebranch@pb.co.nz
W pb.co.nz

RED HOT REAL ESTATE - WAIMATE

A locally owned company with knowledgeable and experienced salespeople, offering a full range of Real Estate services in the Waimate area. Residential, Lifestyle and Rural Sales, Property Management and Leasing.

A 78 Queen Street, Waimate
P 03 689 1015 or 0800 733 468
E waimate@redhotrealestate.nz
W redhotrealestate.nz

REDHOT REAL ESTATE

W A I M A T E

Licensed Real Estate Agent REAA 2009

motoring

The central location of the Waimate District makes it an easy drive if you are coming from the north or south or anywhere in between!

WHITEHORSE MOTORS, RD PETROLEUM



Petrol 91, 95 (purchase 24/7) and diesel. 9kg LPG bottles. Hot food and coffee. Vehicle servicing and repairs, WOF. Parts store.

A 73 High Street, Waimate
P 03 689 7309
E info@whitehorsemotors.co.nz



explore SOUTH ISLAND



distances & drive times

to TIMARU	45km	35mins
to CHRISTCHURCH	207km	2½hrs
to QUEENSTOWN	273km	3½hrs
to DUNEDIN	153km	2hrs
to AORAHI / MT COOK	209km	2½hrs
to OAMARU	47km	35mins



enjoy your stay

WAIMATE

a district to explore

WAIMATE INFORMATION CENTRE

A. Waimate Event Centre, Paul Street, Waimate
P. 03 689 7771
E. info@waimatedc.govt.nz



waimate.org.nz